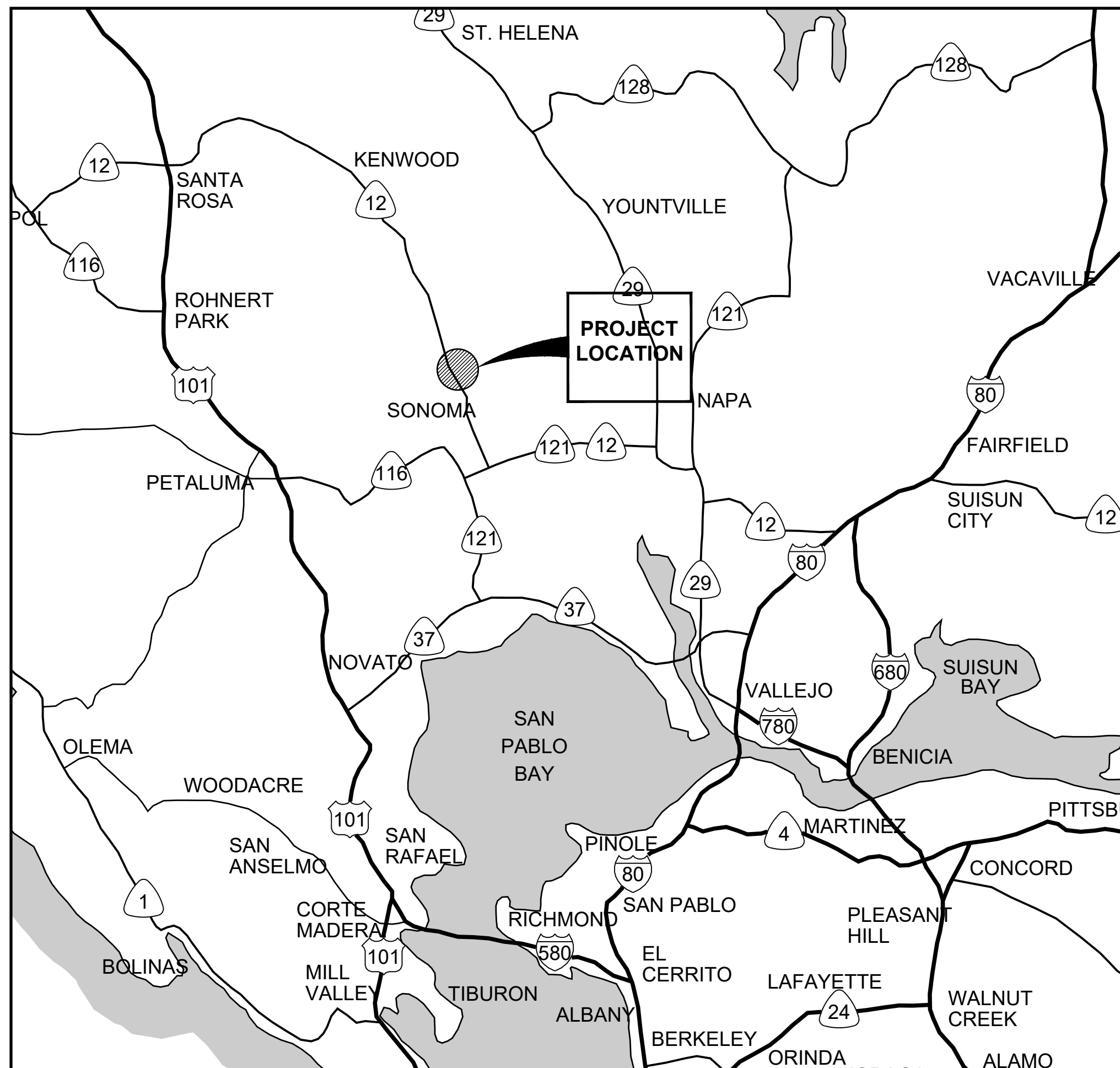


# IFER STORAGE AND RECOVERY DRILLING PHASE

## VALLEY OF THE MOON WATER DISTRICT SONOMA, CA

JANUARY 2023

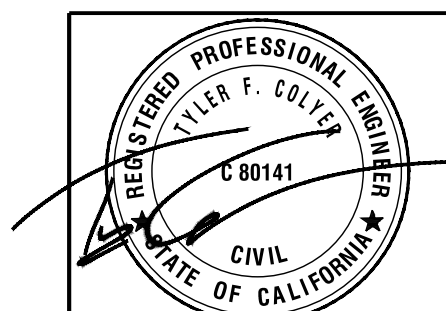


LOCATION MAP  
NO SCALE

DRAWING LIST		
SHEET NUMBER	DRAWING NUMBER	TITLE
GENERAL		
1	G-1	TITLE SHEET, LOCATION MAPS, AND DRAWING LIST
2	G-2	GENERAL NOTES
3	G-3	ABBREVIATIONS, REFERENCE SYMBOLS, AND GENERAL LEGEND
CIVIL		
4	C-1	PARK AVENUE WELL AND MONITORING WELLS
5	C-2	CHESTNUT EXPLORATORY WELL
6	C-3	VERANO MONITORING WELL
7	C-4	WELL AND MONITORING WELL DETAILS



VICINITY MAP  
NO SCALE



SIGNED: 1/18/2023

BID SET

**eki** environment  
& water

2001 JUNIPERO SERRA BOULEVARD, SUITE 300  
DALY CITY, CALIFORNIA 94014  
(650) 292-9100 • FAX (650) 552-9012

**AQUIFER STORAGE AND RECOVERY  
DRILLING PHASE  
VALLEY OF THE MOON WATER DISTRICT  
TITLE SHEET, LOCATION MAPS, AND  
DRAWING LIST**

DATE:	JAN 2023	△	ISSUED FOR BID	TFC	01/23
SCALE:	AS SHOWN				
DRAWN:	EF				
DESIGNED:	TC				
APPROVED:	MV				
JOB NO.:	C20169.00	REV	DESCRIPTION	APPROD	DATE

**VERIFY SCALE**

BAR IS ONE INCH ON ORIGINAL DRAWING.

0 1"

IF NOT ONE INCH ON THIS SHEET, ADJUST SCALES ACCORDINGLY

SHEET NUMBER

G-1

1 OF 7

Path: G:\eki\_construction Dwg\G20169.00    Filename: C20169.00\_G-2.dwg    Plot Date: January 18, 2023 - 4:21 PM    CADD User: Emmanuel Fonseca

GENERAL NOTES

1. THE CONTRACTOR SHALL SATISFY ITSELF AS TO THE EXISTING CONDITIONS PRIOR TO BIDDING THE PROJECT.
2. THE CONTRACTOR SHALL COMPLY WITH THE PROVISIONS OF THE SONOMA COUNTY MUNICIPAL REGIONAL PERMIT (MRP) NATIONAL POLLUTION DISCHARGE ELIMINATION SYSTEM (NPDES) PERMIT CA0025054 AND SHALL FOLLOW STORM WATER BEST MANAGEMENT PRACTICES.
3. THE CONTRACTOR SHALL AT ALL TIMES MAINTAIN ADEQUATE DRAINAGE PATTERNS AT THE SITE. WATER SHALL NOT BE ALLOWED TO POND OR STAND DUE TO CONTRACTOR ACTIVITY.
4. FOR LANE CLOSURES, THE CONTRACTOR SHALL PROVIDE A TRAFFIC CONTROL PLAN AND OBTAIN APPROVAL FROM THE ENGINEER BEFORE COMMENCING WORK. THE CONTRACTOR SHALL PROVIDE FLAGMEN, CONES, AND/OR BARRICADES, AS NECESSARY TO CONTROL TRAFFIC AND PREVENT HAZARDOUS CONDITIONS, PER THE CALIFORNIA DEPARTMENT OF TRANSPORATION STANDARD PLANS, SPECIFICATIONS AND MANUAL ON UNIFORM TRAFFIC CONTROL DEVICES, LATEST EDITIONS.
5. THE CONTRACTOR SHALL CONTROL DUST AT ALL TIMES, IN ACCORDANCE WITH CALTRANS STANDARD PLANS, OR AS DIRECTED BY THE ENGINEER.
6. ANY PAVEMENT MARKING AND STRIPING DAMAGED DURING CONSTRUCTION SHALL BE REPLACED BY THE CONTRACTOR, IN ACCORDANCE WITH CALTRANS STANDARD PLANS, OR AS DIRECTED BY THE ENGINEER.
7. NO TRENCHES OR HOLES IN THE PUBLIC RIGHT OF WAY SHALL BE LEFT OPEN OVERNIGHT; USE STEEL PLATING OR HOT-MIX ASPHALT AS REQUIRED TO PROTECT EXCAVATIONS OVERNIGHT.
8. SURVEY MONUMENTS TO BE PROTECTED DURING CONSTRUCTION. DO NOT ADJUST SURVEY MONUMENTS DURING PAVING UNLESS THEY ARE REFERENCED AND RECORDED.
9. THE LOCATIONS OF EXISTING UNDERGROUND UTILITIES SHOWN ON THE DRAWINGS ARE APPROXIMATE AND ARE BASED ON RECORD INFORMATION PROVIDED BY UTILITY OWNERS. THE EXISTING ELEVATIONS AND LOCATIONS MAY VARY FROM THOSE SHOWN. IT IS THE RESPONSIBILITY OF THE CONTRACTOR TO CONTACT ALL UTILITIY COMPANIES SO THAT THOSE COMPANIES MARK THE LOCATIONS OF THEIR UTILITIES PRIOR TO CONTRACTOR EXCAVATIONS. CONTACT UNDERGROUND SERVICE ALERT (USA) (800) 642-2444 TO MARK UTILITIES, AT LEAST 48 HOURS PRIOR TO EXCAVATING. ALL UNDERGROUND FACILITIES, PIPING AND UTILITIES ELEVATIONS AND LOCATIONS WHICH WILL AFFECT THE WORK SHALL BE VERIFIED BY THE CONTRACTOR BY POTHOLING.
10. PROTECT ALL EXISTING UTILITIES DURING CONSTRUCTION. DAMAGE TO EXISTING UTILITIES RESULTING FROM THE CONTRACTOR'S CONSTRUCTION ACTIVITIES SHALL BE REPAIRED BY THE CONTRACTOR, AT THE CONTRACTOR'S EXPENSE.
11. CONTRACTOR TO FIELD VERIFY ALL EXISTING SITE CONDITIONS IN THE AREA OF THE WORK PRIOR TO CONSTRUCTION. IF A SIGNIFICANT CONFLICT EXISTS BETWEEN THE CONTRACT DOCUMENTS AND ACTUAL CONDITIONS, CONTRACTOR SHALL NOTIFY ENGINEER IMMEDIATELY.
12. CONTRACTOR'S WORK INCLUDES ALL INCIDENTAL AND APPURTENANT WORK NECESSARY TO PROVIDE A COMPLETE AND FULLY-FUNCTIONING FACILITY. NO ADDITIONAL COMPENSATION WILL BE ALLOWED FOR ANY ACTIVITIES OTHER THAN THOSE LISTED IN THE BID SCHEDULE WITHOUT AN AUTHORIZED CHANGE ORDER.
13. THE CONTRACTOR SHALL SUPPLY AND MAINTAIN SANITARY FACILITIES FOR WORKERS AND VISITORS AT THE CONSTRUCTION SITE. SERVICE AT LEAST TWICE WEEKLY.
14. ALL EXCESS EXCAVATED MATERIAL SHALL BECOME THE PROPERTY OF THE CONTRACTOR AND SHALL BE HANDLED, TRANSPORTED, AND DISPOSED FROM THE SITE IN ACCORDANCE WITH LAWS AND REGULATIONS AT THE CONTRACTOR'S EXPENSE. CONTRACTOR MAY ASSUME, FOR BIDDING PURPOSES ONLY, THAT EXCAVATED SOIL IS NON-HAZARDOUS. HOWEVER, SUCH ASSUMPTION DOES NOT RELIEVE CONTRACTOR'S FULL AND COMPLETE RESPONSIBILITY FOR COMPLYING WITH LAWS AND REGULATIONS, INCLUDING CHARACTERIZATION OF EXCESS MATERIAL FOR MANAGEMENT AND DISPOSAL. CONTRACTOR SHALL PROMPTLY NOTIFY AND CONFER WITH ENGINEER IF ANY EVIDENCE OF SOIL CONTAMINATION IS OBSERVED.
15. UNLESS OTHERWISE NOTED, ALL PAVEMENT, GUTTERS, WALKS, FENCES AND OTHER SURFACE IMPROVEMENTS THAT ARE DISTURBED OR DAMAGED BY CONSTRUCTION SHALL BE RESTORED TO ORIGINAL CONDITIONS BY CONTRACTOR WITHOUT ADDITIONAL COST TO THE DISTRICT.
16. THE CONTRACTOR SHALL SELECT, INSTALL AND MAINTAIN SHORING, SHEETING, BRACING, AND SLOPING AS NECESSARY TO MAINTAIN SAFE EXCAVATIONS.
17. CONTRACTOR AGREES THAT IN ACCORDANCE WITH GENERALLY ACCEPTED CONSTRUCTION PRACTICES, CONTRACTOR SHALL ASSUME SOLE AND COMPLETE RESPONSIBILITY FOR JOB SITE CONDITIONS DURING THE COURSE OF THE PROJECT, INCLUDING SAFETY OF ALL PERSONS AND PROPERTY; THAT THIS REQUIREMENT SHALL BE MADE TO APPLY CONTINUOUSLY AND NOT BE LIMITED TO NORMAL WORKING HOURS.
18. CONTRACTOR SHALL MAINTAIN TEMPORARY FENCING DURING THE CONSTRUCTION PERIOD.
19. COORDINATES TO STRUCTURES ARE SHOWN TO THE OUTSIDE OF WALLS UNLESS OTHERWISE NOTED.
20. CONTRACTOR SHALL COORDINATE WITH A THIRD PARTY WELDING INSPECTOR TO ACCEPT ALL WELDING RELATED WORK (SEE SPECIFICATIONS).

REGISTERED PROFESSIONAL ENGINEER

TYLER F. COLLEY

C 80141

CIVIL

STATE OF CALIFORNIA

SIGNED: 1/18/2023

BID SET

VERIFY SCALE

1" BAR IS ONE INCH ON ORIGINAL DRAWING.

0 1"

IF NOT ONE INCH ON THIS SHEET, ADJUST SCALES ACCORDINGLY

SHEET NUMBER	
G-2	
2	OF 7

AQUIFER STORAGE AND RECOVERY  
DRILLING PHASE  
VALLEY OF THE MOON WATER DISTRICT

GENERAL NOTES

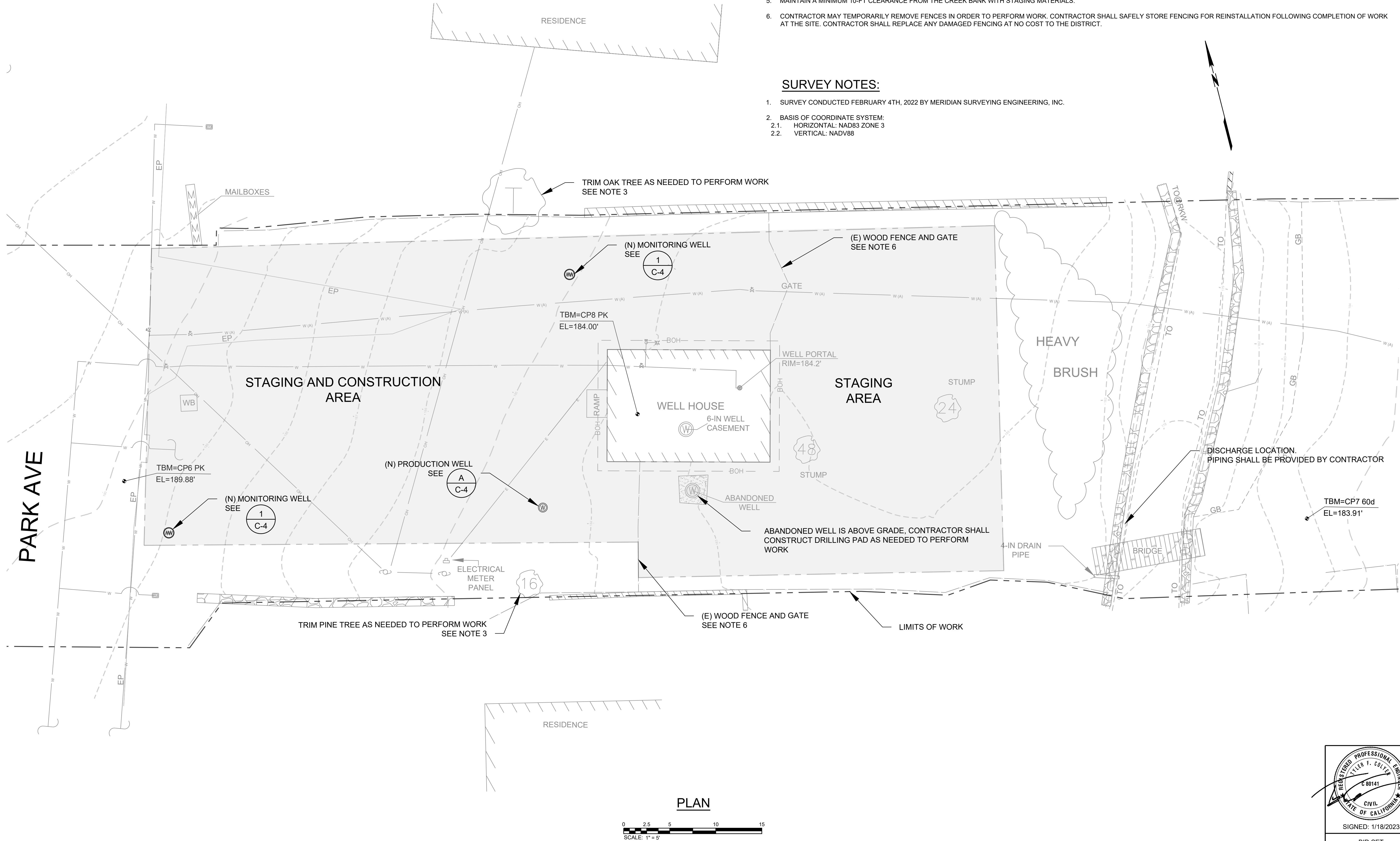
eki environment & water

2001 JUNIPERO BERRA BOULEVARD, SUITE 300  
DUBLIN, CA 94568  
(650) 292-9100 • FAX (650) 552-9012

ABBREVIATIONS			REFERENCE SYMBOLS			GENERAL LEGEND		
<div><div>A</div><div>A</div><div>ABAN</div><div>AC</div><div>ACI</div><div>ADDIT</div><div>AGG</div><div>AISC</div><div>ALUM</div><div>APPROX</div><div>ARV</div><div>ASTM</div><div>AWS</div><div>B</div><div>BM</div><div>BMP</div><div>BOT</div><div>BLKG</div><div>BF</div><div>BW</div><div>C</div><div>CB</div><div>C.C.</div><div>CDF</div><div>CHEM</div><div>CFM</div><div>C/L</div><div>CLR</div><div>CLSM</div><div>CMU</div><div>CO</div><div>COL</div><div>CONC</div><div>CONST(R)</div><div>CONT</div><div>CPLG</div><div>D</div><div>D</div><div>DET</div><div>DFPT</div><div>DI</div><div>DIA.</div><div>DIP</div><div>DIM</div><div>DN</div><div>DW</div><div>DWG</div><div>E</div><div>EX.</div><div>E</div><div>EA</div><div>EL(EV)</div><div>ELEC</div><div>EMH</div><div>EP</div><div>EW</div><div>EXP</div><div>F</div><div>(E)</div><div>FCA</div><div>FCO</div><div>FD</div><div>FG</div><div>FH</div><div>FIG</div><div>FIN</div><div>FM</div><div>FPM</div><div>FT</div><div>FT BGS</div><div>FW</div><div>G</div><div>G</div><div>GA</div><div>GAL</div><div>GALV</div><div>GPM</div><div>GR</div><div>GS</div><div>GV</div><div>H</div><div>H</div><div>HB</div><div>HDLPE</div><div>HORIZ</div><div>HP</div><div>HR</div><div>I</div><div>I.D.</div><div>I.E.</div><div>INV</div><div>IN.</div><div>IN. WC</div><div>IRR(IG)</div></div> <div><div>AMP</div><div>ABANDON</div><div>ASPHALTIC CONCRETE</div><div>AMERICAN CONCRETE INSTITUTE</div><div>ADDITIONAL</div><div>AGGREGATE</div><div>AMERICAN INSTITUTE OF STEEL CONSTRUCTION</div><div>ALUMINIUM</div><div>APPROXIMATE</div><div>AIR RELEASE VALVE</div><div>AMERICAN SOCIETY FOR TESTING MATERIALS</div><div>AMERICAN WELDING SOCIETY</div><div>BENCHMARK</div><div>BEST MANAGEMENT PRACTICE</div><div>BOTTOM</div><div>BLOCKING</div><div>BLIND FLANGE</div><div>BACKWASH</div><div>CATCH BASIN</div><div>CENTER TO CENTER</div><div>CONTROL DENSITY FILL</div><div>CHEMICAL</div><div>CUBIC FEET PER MINUTE</div><div>CENTERLINE</div><div>CLEAR</div><div>CONTROLLED LOW STRENGTH MATERIAL</div><div>CONCRETE MASONRY UNIT</div><div>CLEANOUT</div><div>COLUMN</div><div>CONCRETE</div><div>CONSTRUCTION</div><div>CONTINUATION</div><div>COUPLING</div><div>DRAIN</div><div>DETAIL</div><div>DOUGLAS FIR PRESSURE TREATED</div><div>DUCTILE IRON</div><div>DIAMETER</div><div>DUCTILE IRON PIPE</div><div>DIMENSION</div><div>DOWN</div><div>DRINKING (POTABLE) WATER</div><div>DRAWING</div><div>EXISTING</div><div>EAST</div><div>EACH</div><div>ELEVATION</div><div>ELECTRICAL</div><div>ELECTRICAL MANHOLE</div><div>EDGE OF PAVEMENT</div><div>EACH WAY</div><div>EXPANSION</div><div>FUTURE</div><div>FLANGED COUPLING ADAPTER</div><div>FLOOR CLEAN OUT</div><div>FLOOR DRAIN</div><div>FINAL GRADE</div><div>FIRE HYDRANT</div><div>FIGURE</div><div>FINISH</div><div>FLOW METER</div><div>FEET PER MINUTE</div><div>FEET</div><div>FEET BELOW GROUND SURFACE</div><div>FIRE WATER</div><div>GAS</div><div>GAGE</div><div>GALLON</div><div>GALVANIZED</div><div>GALLONS PER MINUTE</div><div>GRADE</div><div>GALVANIZED STEEL</div><div>GATE VALVE</div><div>HEIGHT</div><div>HOSE BIB AND HOSE RACK</div><div>HIGH-DENSITY LINEAR POLYETHYLENE</div><div>HORIZONTAL</div><div>HORSE POWER</div><div>HOUR</div><div>INSIDE DIAMETER</div><div>INVERT ELEVATION</div><div>INVERT</div><div>INCHES</div><div>INCHES OF WATER COLUMN</div><div>IRRIGATION</div></div> <div><div>J</div><div>JB</div><div>JT(S)</div><div>L</div><div>L</div><div>LD</div><div>M</div><div>(M)</div><div>MAX</div><div>MB</div><div>MCC</div><div>MECH</div><div>MFR</div><div>MIN</div><div>MJ</div><div>N</div><div>N</div><div>(N)</div><div>NA</div><div>NIC</div><div>NO.</div><div>NPDES</div><div>NPT</div><div>NTS</div><div>O</div><div>OC</div><div>O.D.</div><div>OF</div><div>P</div><div>P</div><div>PB</div><div>PCO</div><div>PL</div><div>PO</div><div>PRV</div><div>PSF</div><div>PSIG</div><div>PT</div><div>PVC</div><div>PVMT</div><div>PW</div><div>Q</div><div>QC</div><div>QTY</div><div>R</div><div>R</div><div>R/W</div><div>RC(P)</div><div>RD</div><div>RED</div><div>REINF</div><div>REQD</div><div>RES</div><div>RPP</div><div>S</div><div>S</div><div>SCH</div><div>SD(M)</div><div>SECT</div><div>SHT(S)</div><div>SIM</div><div>SMH</div><div>SPEC(S)</div><div>SQ</div><div>SS</div><div>SST</div><div>STA.</div><div>STD</div><div>STL</div><div>T</div><div>T/</div><div>T</div><div>TEL</div><div>TEMP</div><div>THK</div><div>TOC</div><div>TRPA</div><div>TYP.</div></div> <div><div>JUNCTION BOX</div><div>JOINT(S)</div><div>LENGTH</div><div>DEVELOPMENT LENGTH</div><div>MODIFIED</div><div>MAXIMUM</div><div>MACHINE BOLT</div><div>MOTOR CONTROL CENTER</div><div>MECHANICAL</div><div>MANUFACTURER</div><div>MINIMUM</div><div>MECHANICAL JOINT</div><div>NORTH</div><div>NEW</div><div>NOT APPLICABLE</div><div>NOT IN CONTRACT</div><div>NUMBER</div><div>NATIONAL POLLUTANT DISCHARGE ELIMINATION SYSTEM</div><div>NATIONAL PIPE THREAD</div><div>NOT TO SCALE</div><div>ON CENTER</div><div>OUTSIDE DIAMETER</div><div>OVERFLOW</div><div>PIPE</div><div>PULL BOX</div><div>PRESSURE CLEANOUT</div><div>PLATE</div><div>PUSH ON JOINT</div><div>PRESSURE RELIEF VALVE</div><div>POUNDS PER SQUARE FOOT</div><div>POUNDS PER SQUARE INCH, GAUGE</div><div>POINT</div><div>POLYVINYL CHLORIDE</div><div>PAVEMENT</div><div>POTABLE WATER</div><div>RADIUS</div><div>RIGHT OF WAY</div><div>REINFORCED CONCRETE (PIPE)</div><div>ROOF DRAIN</div><div>REDUCER</div><div>REINFORCED(ING)</div><div>REQUIRED</div><div>RESIDUAL</div><div>REDUCED PRESSURE</div><div>PRINCIPLE BACKFLOW PREVENTOR</div><div>SOUTH</div><div>SCHEDULE</div><div>STORM DRAIN (MANHOLE)</div><div>SECTION</div><div>SHEET(S)</div><div>SIMILAR</div><div>SEWER MANHOLE</div><div>SPECIFICATION(S)</div><div>SQUARE</div><div>SANITARY SEWER</div><div>STAINLESS STEEL</div><div>STATION</div><div>STANDARD</div><div>STEEL</div><div>TOP OF</div><div>THICKNESS</div><div>TELEPHONE</div><div>TEMPORARY</div><div>THICK</div><div>TOP OF CONCRETE</div><div>TAHOE REGIONAL PLANNING AGENCY</div><div>TYPICAL</div></div> <div><div>U</div><div>UG</div><div>UNK</div><div>V</div><div>V</div><div>VAC</div><div>VERT</div><div>VFD</div><div>VOL</div><div>W</div><div>W</div><div>W/</div><div>WC</div><div>W/O</div><div>WL</div><div>WM</div><div>WMM</div><div>WSP</div><div>WTR</div><div>UNDERGROUND</div><div>UNKNOWN</div><div>VAULT</div><div>VACUUM</div><div>VERTICAL</div><div>VARIABLE FREQUENCY</div><div>DRIVE</div><div>VOLUME</div><div>WATER</div><div>WITH</div><div>WATER COLUMN</div><div>WITHOUT</div><div>WATER LINE</div><div>WATER METER</div><div>WELDED WIRE MESH</div><div>WELDED STEEL PIPE</div><div>WATER</div></div> <div><div><div>DETAILS</div><div>DETAIL DESIGNATION (NUMBERS)</div><div>SHEET DRAWN ON</div><div>DETAIL</div><div>SCALE: X" = XX'</div></div><div><div>SECTIONS</div><div>SECTIONS DESIGNATION (LETTERS)</div><div>SHEET DRAWN ON</div><div>SECTION</div><div>SCALE: X" = XX'</div></div></div> <div><div><div>EARTH</div><div>CONCRETE</div><div>GRAVEL</div></div><div><div>NEW CONTOUR ELEVATION LINE</div><div>EXISTING CONTOUR ELEVATION LINE</div><div>EXISTING STRUCTURE (E)</div><div>NEW STRUCTURE (N)</div><div>PROPOSED ITEM CENTERLINE</div><div>EXISTING WATERLINE</div><div>OVERHEAD ELECTRICAL</div><div>BURIED TELEPHONE CABLE</div><div>FENCE LINE</div><div>PROPERTY LINE</div><div>RIGHT-OF-WAY LINE</div><div>WATER UTILITY BOX</div><div>WATER METER BOX</div><div>WATER VALVE</div><div>WELL</div><div>MONITORING WELL</div><div>EXPLORATORY WELL</div><div>FIRE HYDRANT</div><div>HOSE BIB</div><div>DRAIN INLET (DI)</div><div>ELECTRICAL CONDUIT</div><div>ELECTRIC PANEL BOX</div><div>ELECTRIC UTILITY BOX</div><div>ELECTRIC METER</div><div>JOINT UTILITY POLE</div><div>UNKNOWN UTILITY BOX</div><div>VERTICAL PIPE</div><div>METAL BOLLARD</div><div>TELEPHONE UTILITY BOX</div><div>TREE SYMBOL, W/SIZE</div><div>SURVEY CONTROL</div><div>CUT-OFF</div></div></div> <div><div>NOTES:</div><div>1. THIS DRAWING IS A STANDARD LEGEND AND ABBEVIATIONS SHEET. SOME SYMBOLS AND/OR ABBREVIATIONS MAY NOT APPEAR WITHIN THE DRAWING SET FOR THIS PROJECT.</div></div> <div><div><div>REGISTERED PROFESSIONAL ENGINEER TILLY F. COLVER C 88141 CIVIL STATE OF CALIFORNIA</div><div>SIGNED: 1/18/2023</div><div>BID SET</div></div><div><div>VERIFY SCALE 1" = 10' IF NOT ONE INCH ON THIS SHEET, ADJUST SCALES ACCORDINGLY</div><div>SHEET NUMBER G-3 3 OF 7</div></div><div><div>AQUIFER STORAGE AND RECOVERY DRILLING PHASE VALLEY OF THE MOON WATER DISTRICT ABBREVIATIONS, REFERENCE SYMBOLS, AND GENERAL LEGEND</div><div><div>01/23</div><div>TFC</div><div>ISSUED FOR BID</div><div><div>JAN 2023</div><div>AS SHOWN</div><div>EF</div><div>TC</div><div>REV</div><div>C20169.00</div></div><div>DATE</div><div>SCALE</div><div>DRAWN</div><div>DESIGNED</div><div>APPROVED</div><div>JOB NO.</div><div>DESCRIPTION</div><div>REV</div></div></div><div><div>eki environment &amp; water</div><div>2001 JUNIPERO SERRA BOULEVARD, SUITE 300 DALY CITY, CALIFORNIA 94014 (650) 292-9100 • FAX (650) 552-9012</div></div></div>								



Path: G:\ekj\_construction Dwg\cs\20169.00 Filename: C20169.00\_C-1.dwg Plot Date: January 18, 2023 - 4:22 PM CADD User: Emmanuel Fonseca



NOTES:

- EXISTING SITE CONDITIONS ARE BASED ON AS-BUILTS AND SITE SURVEY. THE OWNER, ENGINEER, AND DESIGN ENGINEER ARE NOT RESPONSIBLE FOR THE COMPLETENESS, LOCATIONS, OR SIZES SHOWN. CONTRACTOR SHALL POTHOLE TO IDENTIFY AND CONFIRM LOCATIONS OF UTILITIES.
- CONTRACTOR SHALL COORDINATE WITH DISTRICT ON ACCESS TO PARKING AND LAYDOWN AREA.
- CONTRACTOR SHALL NOTIFY THE DISTRICT THE EXTENT AND TIMING OF TREE TRIMMING ONE WEEK PRIOR TO WORK.
- THE STREET CAN BE USED AS A TEMPORARY STAGING AREA DURING THE PROJECT IN ACCORDANCE WITH AN ENCROACHMENT PERMIT FROM THE COUNTY AS OBTAINED BY THE CONTRACTOR.
- MAINTAIN A MINIMUM 10-FT CLEARANCE FROM THE CREEK BANK WITH STAGING MATERIALS.
- CONTRACTOR MAY TEMPORARILY REMOVE FENCES IN ORDER TO PERFORM WORK. CONTRACTOR SHALL SAFELY STORE FENCING FOR REINSTALLATION FOLLOWING COMPLETION OF WORK AT THE SITE. CONTRACTOR SHALL REPLACE ANY DAMAGED FENCING AT NO COST TO THE DISTRICT.

SURVEY NOTES:

- SURVEY CONDUCTED FEBRUARY 4TH, 2022 BY MERIDIAN SURVEYING ENGINEERING, INC.
- BASIS OF COORDINATE SYSTEM:
  - HORIZONTAL: NAD83 ZONE 3
  - VERTICAL: NADV88



eki environment & water

2001 JUNIPERO SERRA BOULEVARD, SUITE 300  
DUBLIN, CA 94568  
(650) 252-9100 • FAX (650) 552-9012

AKQUFER STORAGE AND RECOVERY  
DRILLING PHASE  
VALLEY OF THE MOON WATER DISTRICT

PARK AVENUE PRODUCTION WELL AND  
MONITORING WELLS

DATE:	JAN 2023	ISSUED FOR BID	01/23	TFC	01/23
SCALE:	AS SHOWN				
DRAWN:	EF				
DESIGNED:	TC				
APPROVED:	MV				
JOB NO.:	C20169.00				

VERIFIED SCALE  
1" = 5'  
SIGNED: 1/18/2023  
BID SET

REGISTERED PROFESSIONAL ENGINEER  
TYLER F. COLBY  
C 80141  
CIVIL  
STATE OF CALIFORNIA

1" = 5'

IF NOT ONE INCH ON THIS SHEET, ADJUST SCALES ACCORDINGLY

SHEET NUMBER

C-1

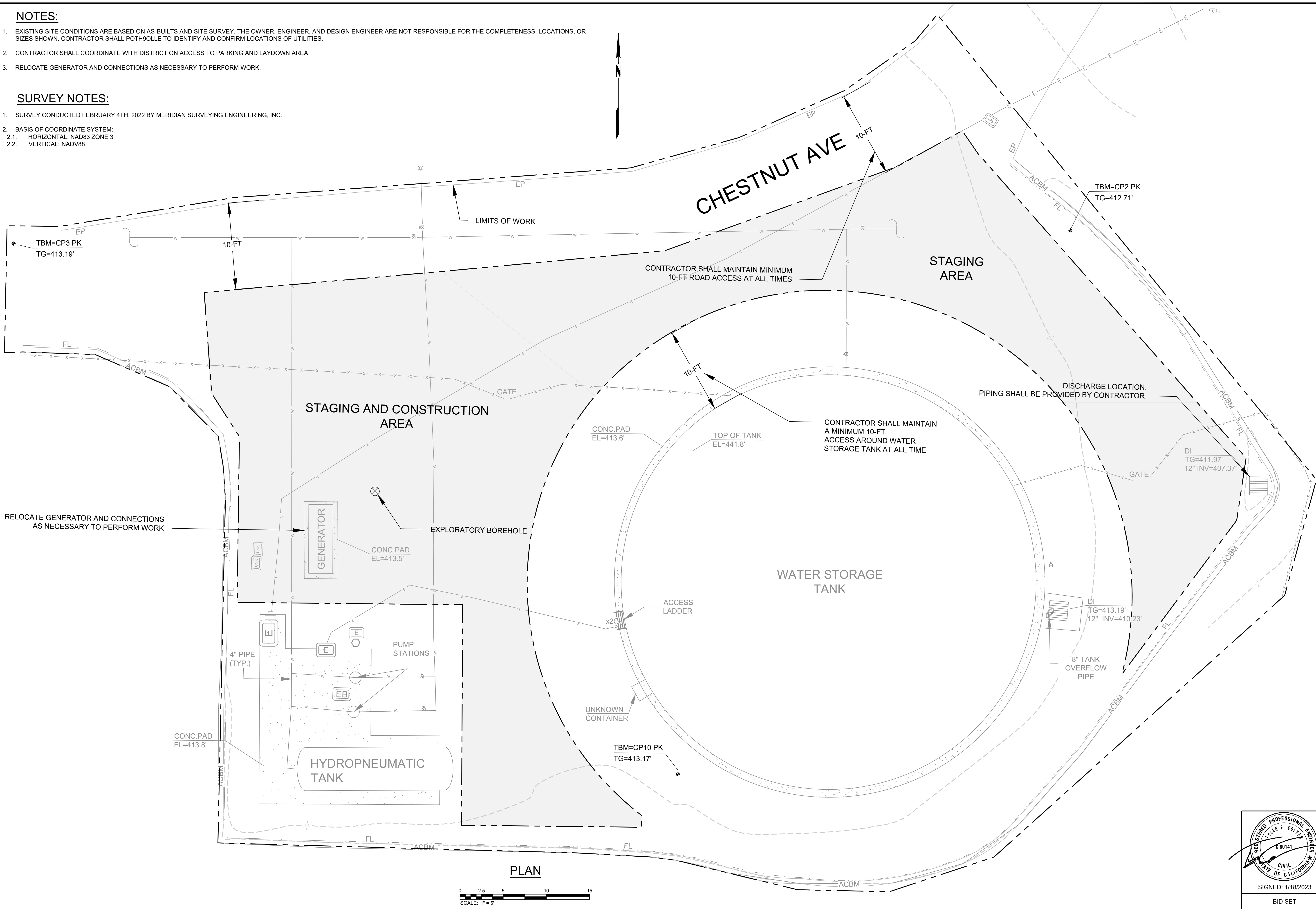
4 OF 7

NOTES:

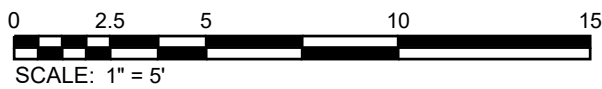
- EXISTING SITE CONDITIONS ARE BASED ON AS-BUILTS AND SITE SURVEY. THE OWNER, ENGINEER, AND DESIGN ENGINEER ARE NOT RESPONSIBLE FOR THE COMPLETENESS, LOCATIONS, OR SIZES SHOWN. CONTRACTOR SHALL POTHOLE TO IDENTIFY AND CONFIRM LOCATIONS OF UTILITIES.
- CONTRACTOR SHALL COORDINATE WITH DISTRICT ON ACCESS TO PARKING AND LAYDOWN AREA.
- RELOCATE GENERATOR AND CONNECTIONS AS NECESSARY TO PERFORM WORK.

SURVEY NOTES:

- SURVEY CONDUCTED FEBRUARY 4TH, 2022 BY MERIDIAN SURVEYING ENGINEERING, INC.
- BASIS OF COORDINATE SYSTEM:
  - HORIZONTAL: NAD83 ZONE 3
  - VERTICAL: NADV88



PLAN



SIGNED: 1/18/2023

BID SET

AQUIFER STORAGE AND RECOVERY

DRILLING PHASE

VALLEY OF THE MOON WATER DISTRICT

CHESTNUT TANK EXPLORATORY WELL

DATE:	JAN 2023	ISSUED FOR BID	TFC	01/23
SCALE:	AS SHOWN			
DRAWN:	EF			
DESIGNED:	TC			
APPROVED:	MV			
JOB NO.:	C20169.00	REV	APPRD	DATE

VERIFY SCALE  
BAR IS ONE INCH ON ORIGINAL DRAWING.  
0 1"  
IF NOT ONE INCH ON THIS SHEET, ADJUST SCALES ACCORDINGLY

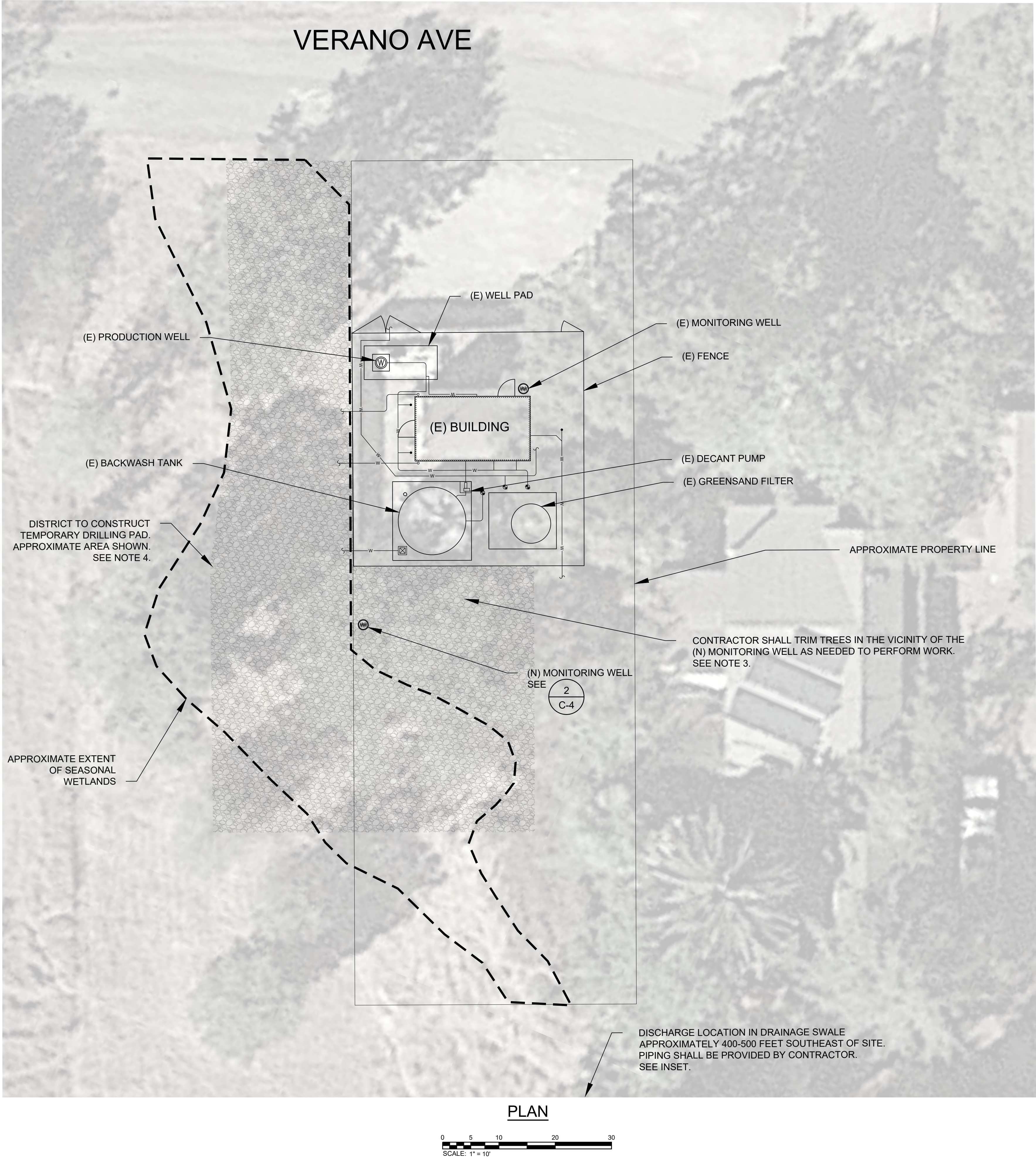
SHEET NUMBER

C-2

5 OF 7

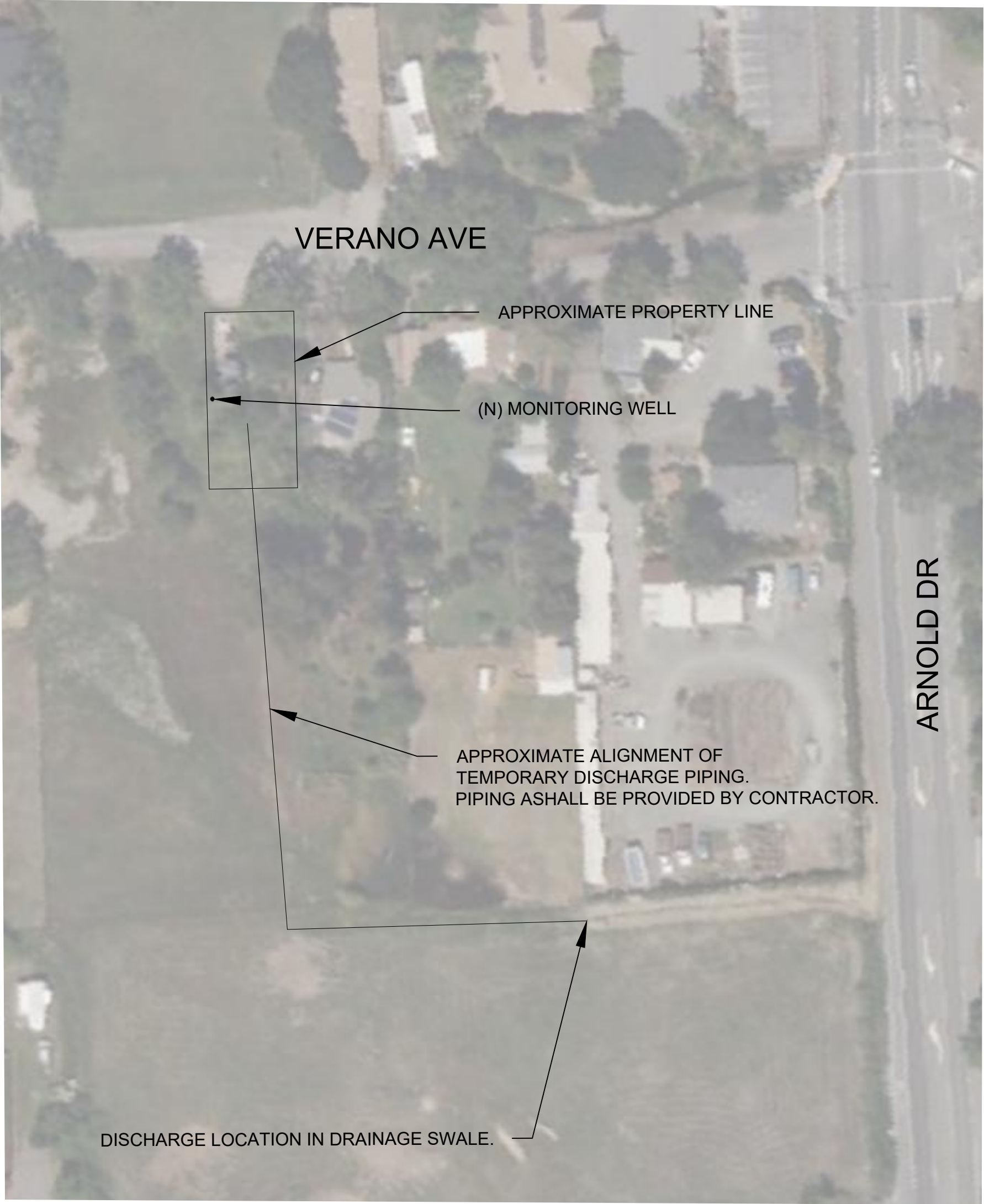
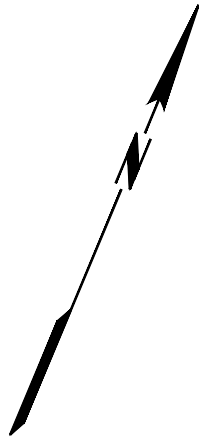


Path: G:\ekj\_construction Dwg\sjC20169.00    Filename: C20169.00\_C-3.dwg    Plot Date: January 18, 2023 - 4:22 PM    CADD User: Emmanuel Fonseca



**NOTES:**

- EXISTING SITE CONDITIONS ARE BASED ON AS-BUILTS AND SITE SURVEY. THE OWNER, ENGINEER, AND DESIGN ENGINEER ARE NOT RESPONSIBLE FOR THE COMPLETENESS, LOCATIONS, OR SIZES SHOWN. CONTRACTOR SHALL POTHOLE TO IDENTIFY AND CONFIRM LOCATIONS OF UTILITIES.
- CONTRACTOR SHALL COORDINATE WITH DISTRICT ON ACCESS TO PARKING AND LAYDOWN AREA.
- CONTRACTOR SHALL NOTIFY THE DISTRICT THE EXTENT AND TIMING OF TREE TRIMMING ONE WEEK PRIOR TO WORK. OAK TREES SHALL NOT BE REMOVED WITHOUT APPROPRIATE COUNTY PERMIT.
- DISTRICT TO CONSTRUCT TEMPORARY DRILLING PAD WITHIN THE SEASONAL WETLAND. CONTRACTOR SHALL ASSIST DISTRICT AS NEEDED, AS DESCRIBED IN SPECIFICATIONS. SEE SPECIFICATIONS FOR ANTICIPATED PERMIT AND RESTORATION REQUIREMENTS.



**INSET**



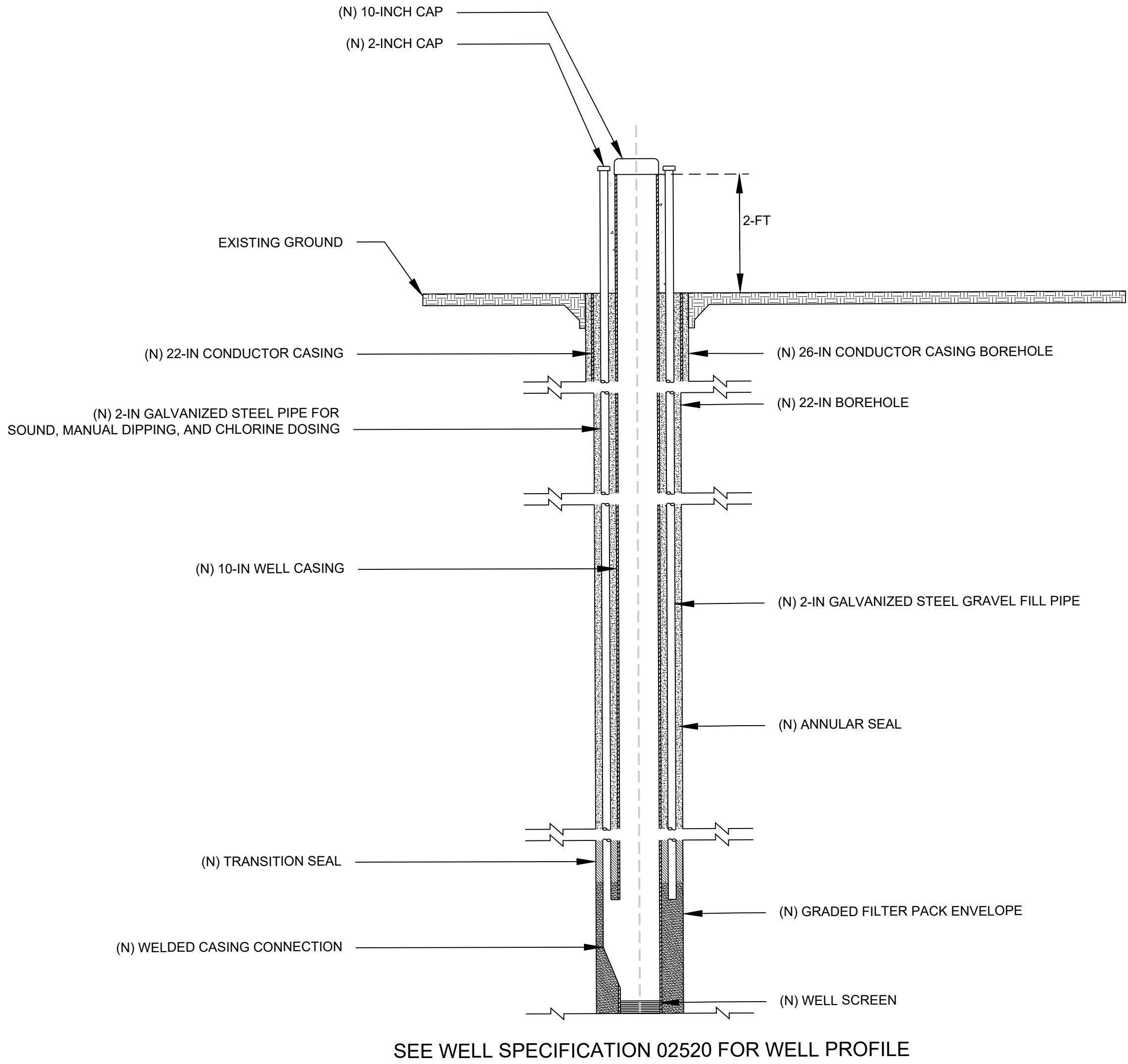
VERIFY SCALE BAR IS ONE INCH ON ORIGINAL DRAWING. IF NOT ONE INCH ON THIS SHEET, ADJUST SCALES ACCORDINGLY	SHEET NUMBER <b>C-3</b>
BID SET	6 OF 7

<b>AQUIFER STORAGE AND RECOVERY DRILLING PHASE VALLEY OF THE MOON WATER DISTRICT VERANO AVENUE MONITORING WELL</b>
--

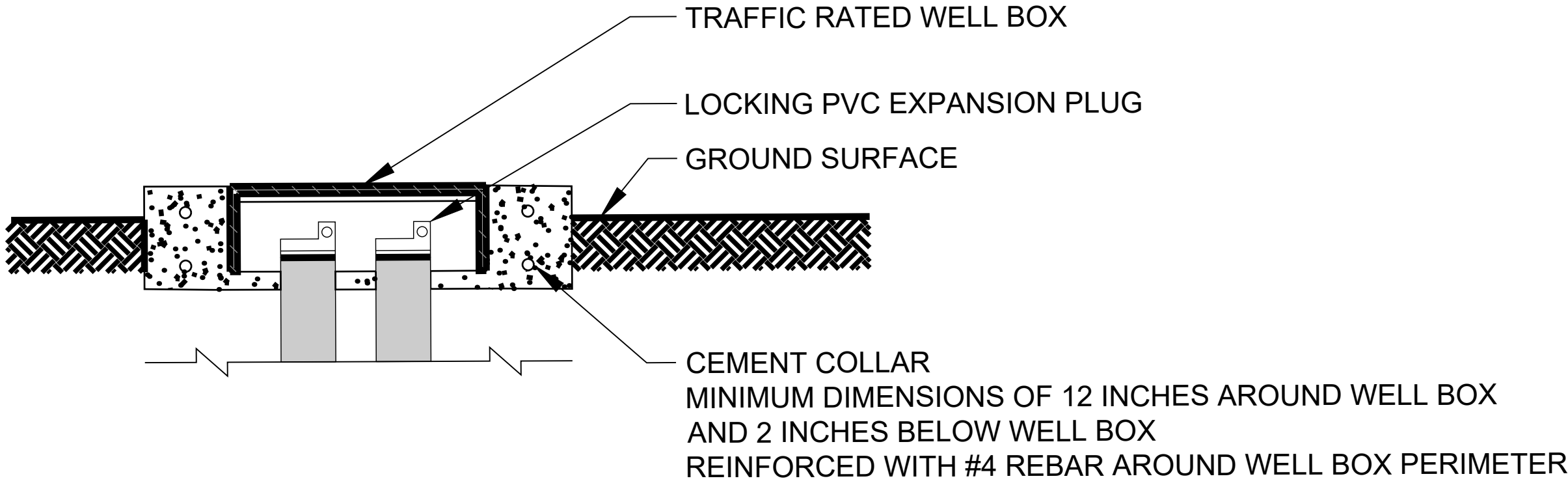
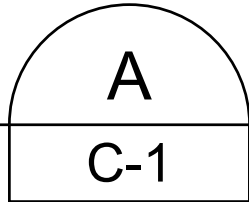
DATE	JAN 2023	TFC	01/23
SCALE	AS SHOWN		
DRAWN	EF		
DESIGNED	TC		
APPROVED	MV		
JOB NO.	C20169.00	REV	DATE



Path: G:\eki\_construction Dwg\20169.00 Filename: C20169.00\_C-4.dwg Plot Date: January 18, 2023 - 4:23 PM CADD User: Emmanuel Fonseca

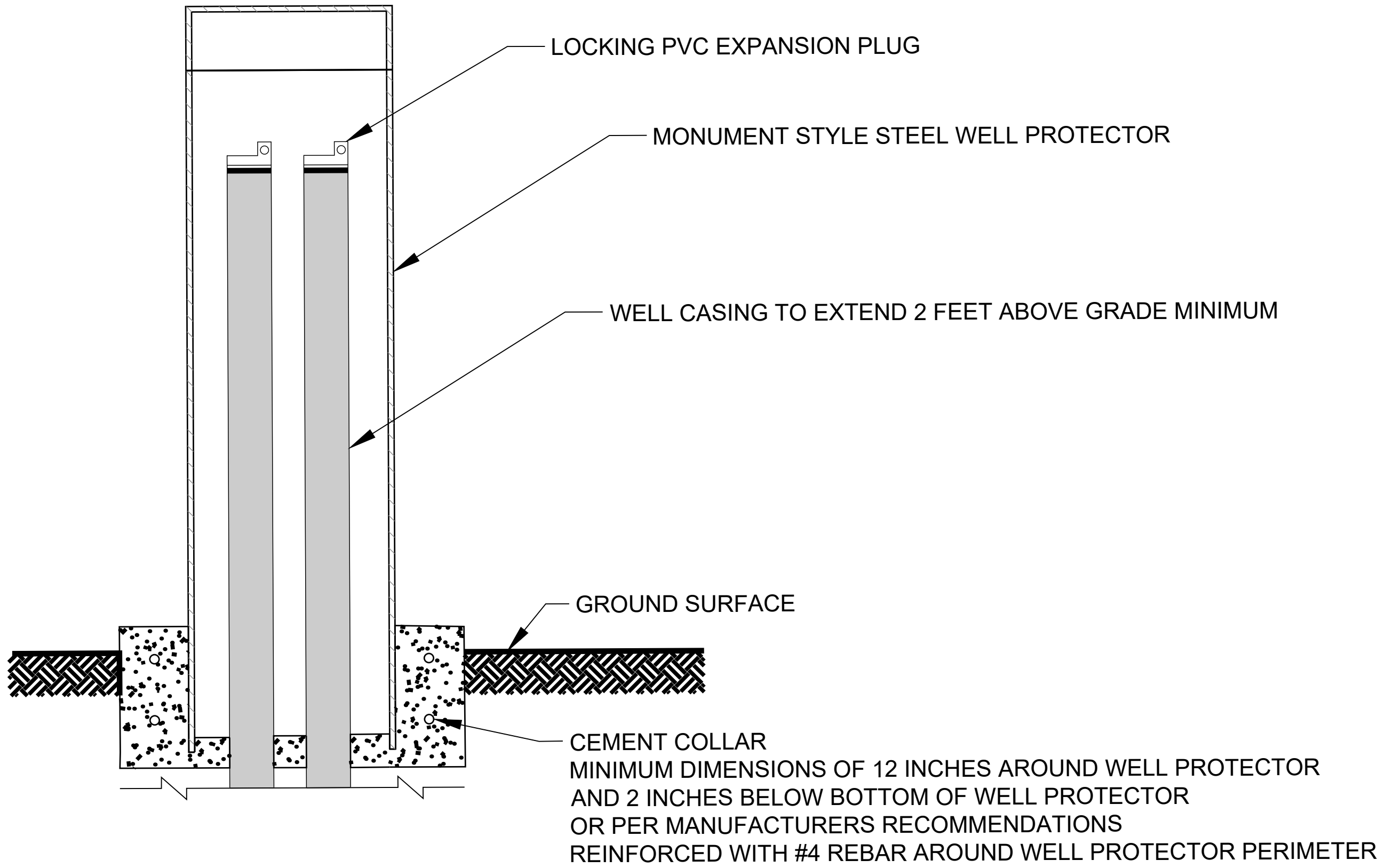
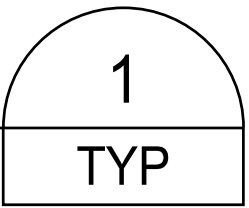


PARK AVENUE  
PRODUCTION WELL SECTION  
NOT TO SCALE



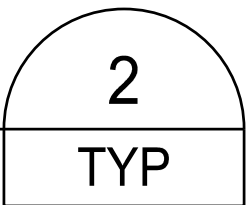
SEE WELL SPECIFICATION 02520 FOR WELL PROFILES

PARK AVENUE MONITORING WELL  
SURFACE COMPLETION  
NOT TO SCALE



SEE WELL SPECIFICATION 02520 FOR WELL PROFILES

VERANO AVENUE MONITORING WELL  
SURFACE COMPLETION  
NOT TO SCALE



REGISTERED PROFESSIONAL ENGINEER  
TYLER F. COLLEY  
C 80141  
CIVIL  
STATE OF CALIFORNIA

SIGNED: 1/18/2023

BID SET

VERIFY SCALE  
1" = 1'-0"  
IF NOT ONE INCH ON THIS SHEET, ADJUST SCALES ACCORDINGLY

SHEET NUMBER  
C-4

AKQUFER STORAGE AND RECOVERY  
DRILLING PHASE  
VALLEY OF THE MOON WATER DISTRICT  
PRODUCTION WELL AND MONITORING  
WELL DETAILS

eki environment & water  
2001 JUNIPERO SERRA BOULEVARD, SUITE 300  
DANVILLE, CALIFORNIA 94526  
(925) 252-9100 • FAX (925) 552-9012

DATE: JAN 2023  
SCALE: AS SHOWN  
DRAWN: EF  
DESIGNED: TC  
APPROVED: MV  
JOB NO.: C20169.00

ISSUED FOR BID  
TFC  
REV  
DESCRIPTION  
APPRD  
DATE

VERIFY SCALE  
1" = 1'-0"  
IF NOT ONE INCH ON THIS SHEET, ADJUST SCALES ACCORDINGLY

SHEET NUMBER  
C-4

7 OF 7